



CHARTERED SURVEYORS

Please call us
01384 456789

Canalside, 9A Narrowboat Way
Dudley, West Midlands, DY2 0XQ



Part Unit 19 Thornleigh Trading Estate, Dudley DY2 8UB

FOR SALE

LAND / SITES / YARDS

Size
circa 0.21 acres

Purchase Price
Offers over £200,000

Temporary buildings of circa 3,300 sq.ft.

Fenced and gated

Surfaced - tarmacadam/concrete

Location

Located on the Thornleigh Trading Estate closest to the entrance off the Dudley Southern By-pass (A461). Access also available off Shaw Road. Part of a sizeable pocket of industry which lies within half a mile of Dudley Town Centre. Junction 2 of the M5 is approx. 5 miles distant.

Description

A secure (fenced and gated) parcel of land part covered at present with a range of timber framed single storey buildings.

Tarmac/concrete surfaced. Derelict toilet block included.

Site Area

Circa 0.21 acres.

Rating Assessment

Rateable Value: £10,500.

U.B.R. 43.2p in the £ - 2026/27

Services

Mains electricity, water and drainage are available for connection. No gas.

Note: Electricity is purchased off a private company.

Tenure

Freehold.

Purchase Price

Offers over £200,000.

V.A.T.

V.A.T. will not be levied on the purchase price.

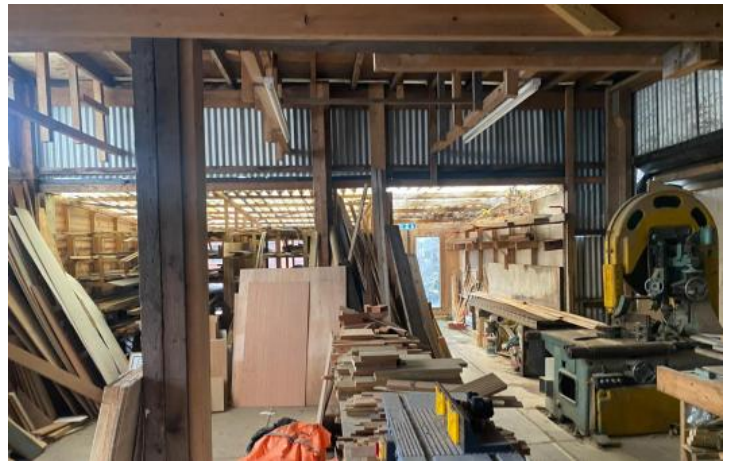
Viewing

Strictly by appointment with the Sole Agents - Sellers Chartered Surveyors - 01384 456789.

Mark Shephard - 07764 269801

markshephard@sellers-surveyors.co.uk

Additional Images



Location Map

